



SYMON SMITH

RESIDENTIAL & COMMERCIAL ESTATE AGENTS
AND PROPERTY MANAGEMENT

240 Stamford Hill, London, N16 6TT

Sales: 020 8802 0025

sales@symonsmith.co.uk

Management: 020 8802 0022

management@symonsmith.co.uk



60 Ferndale Road, London, N15 6UQ

£775,000

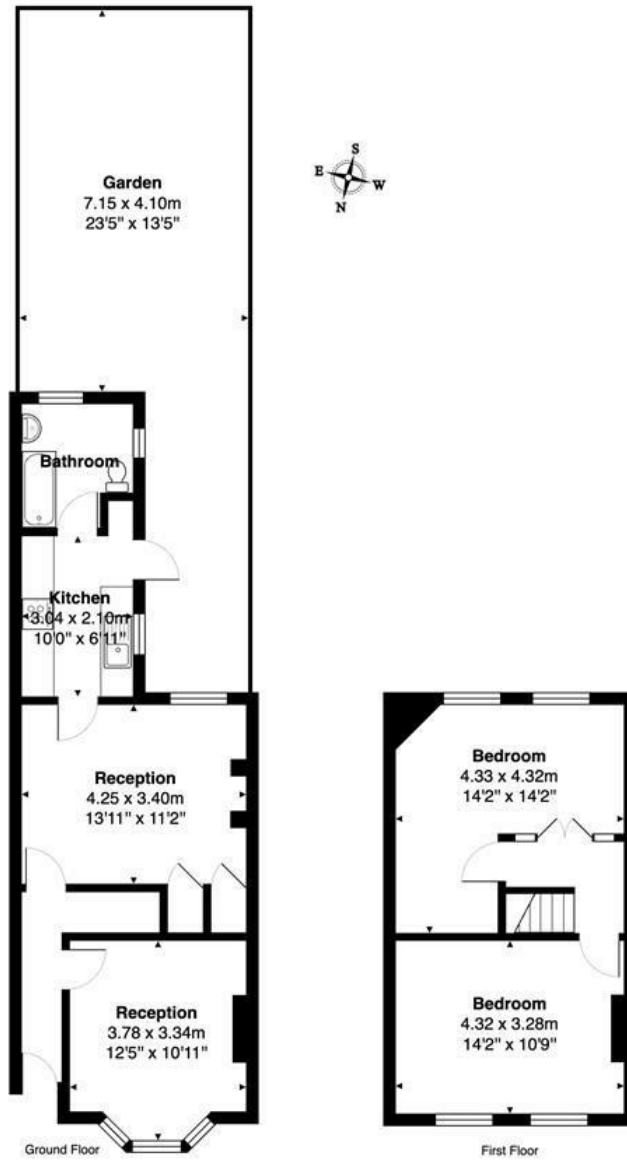
Nestled on the charming Ferndale Road in London, this delightful two-bedroom mid-terraced house offers a perfect blend of comfort and convenience. Spanning an impressive 846 square feet, the property features a welcoming reception room that invites you to relax and unwind. The ground floor is thoughtfully designed with a spacious bathroom, ensuring practicality for everyday living.

The two well-proportioned bedrooms provide ample space for rest and relaxation, making this home ideal for small families or professionals seeking a peaceful retreat. The additional reception room offers versatility, whether you choose to use it as a dining area, a study, or a playroom.

Situated in a vibrant neighbourhood, this property is just a short stroll away from a variety of local amenities, ensuring that all your daily needs are easily met. Furthermore, the proximity to South Tottenham station makes commuting a breeze, allowing for quick access to central London and beyond.

- Two Double Bedrooms
- Ground Floor Bathroom
- Council Tax Band D
- Mid terraced
- Close to Amenities
- Freehold
- Two Reception Rooms
- EPC Rating D

Ferndale Road, LONDON, N15 6UQ



Total Area: 78.6 m² ... 846 ft²
All measurements are approximate and for display purposes only.



WWW.SYMONSMITH.CO.UK

Symon Smith Ltd, registered in England 110 Lancaster Road, New Barnet, Herts EN4 8AL No. 3600107 VAT No. 247 764 331